

# Adding a root certificate

If the browser security window opens while you are trying to connect to the Web-client (Fig. 1), it is necessary to add the **moex.cer** root certificate of Moscow Exchange to the list of trusted certificates.

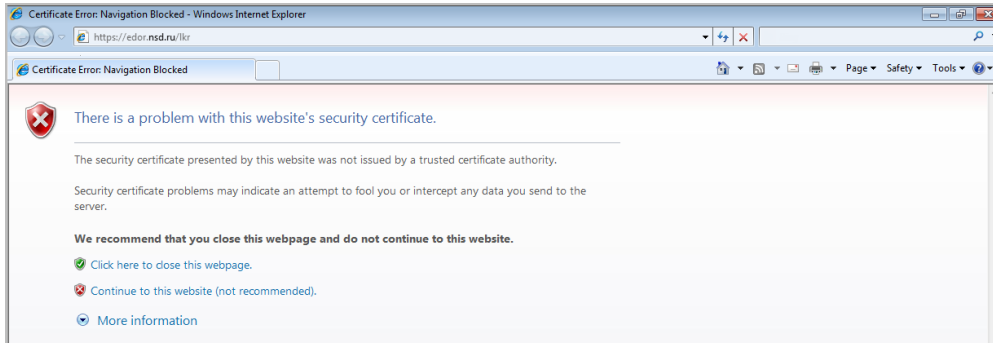
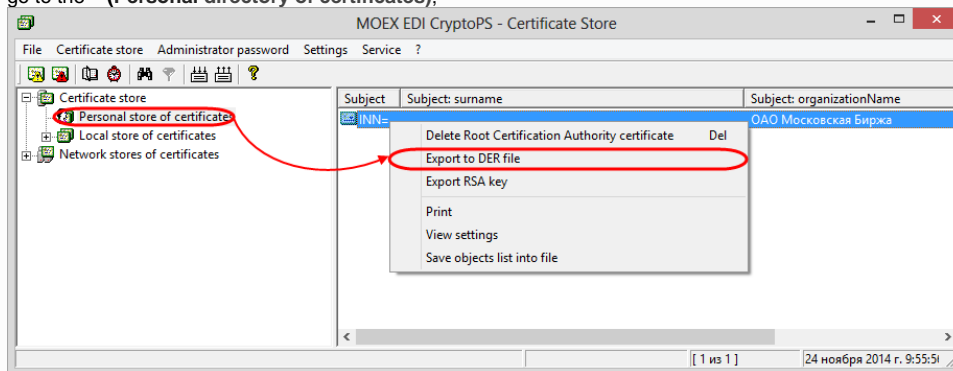


Fig. 1 – browser security window

**i** Root certificate of the Moscow Exchange ("Certification center," serial number 40:40:10:A8:D9:EB:39:2C:09:5D:7D:8E:50:AB:39:BD ) can be exported from the Certificates storage. To do this:

1. go to the **(Personal directory of certificates);**



2. select the the root certificate of the Moscow Exchange, right-click to open the shortcut menu and select **DER (Export to a DER file)**.

To do this:

1. open the system directory of certificates, type "certmgr.msc" string in the Windows search box (Fig. 2). Then left-click on the found file. This will open the system certificates storage (Fig. 3);

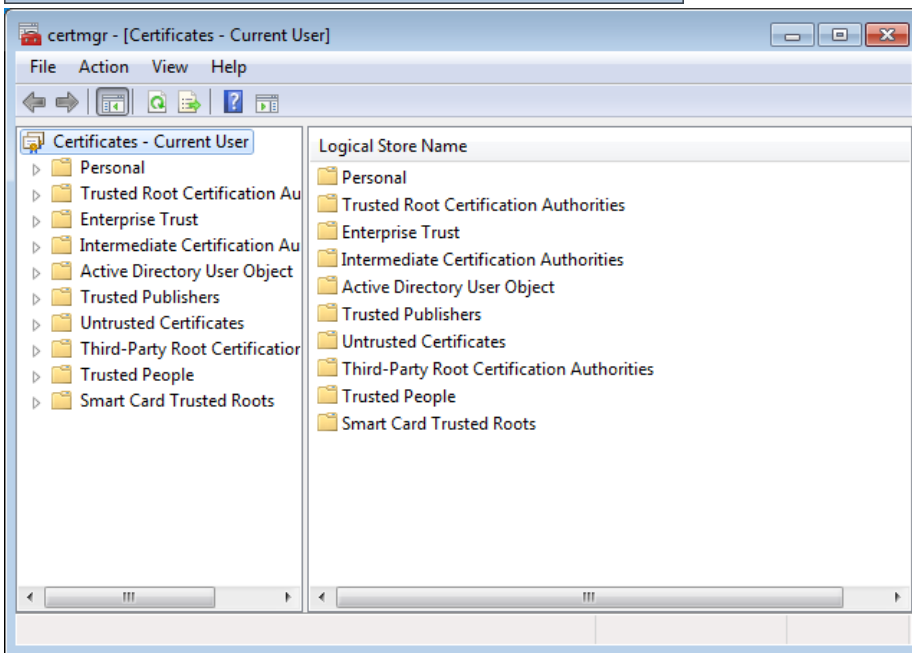
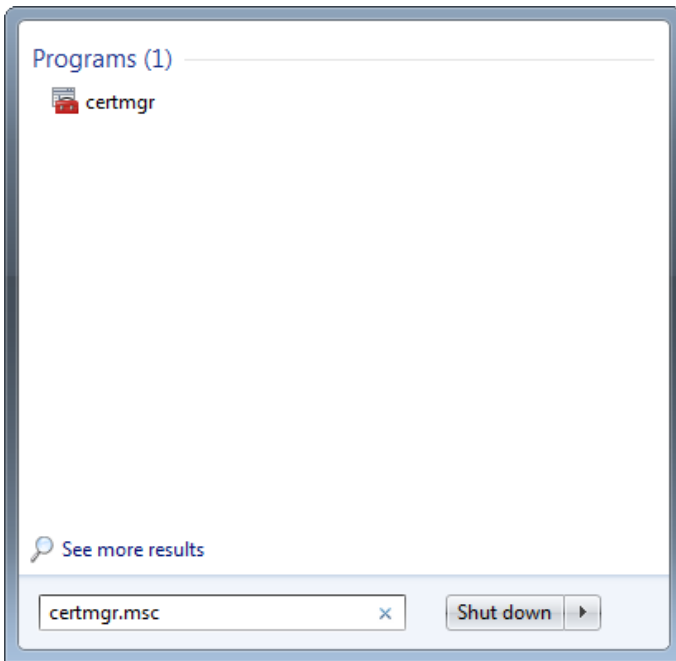


Fig. 2 – search of the system directory of certificates

Fig. 3 – system directory of certificates

2. go to the **Certificates** section in the sidebar (Fig. 4).

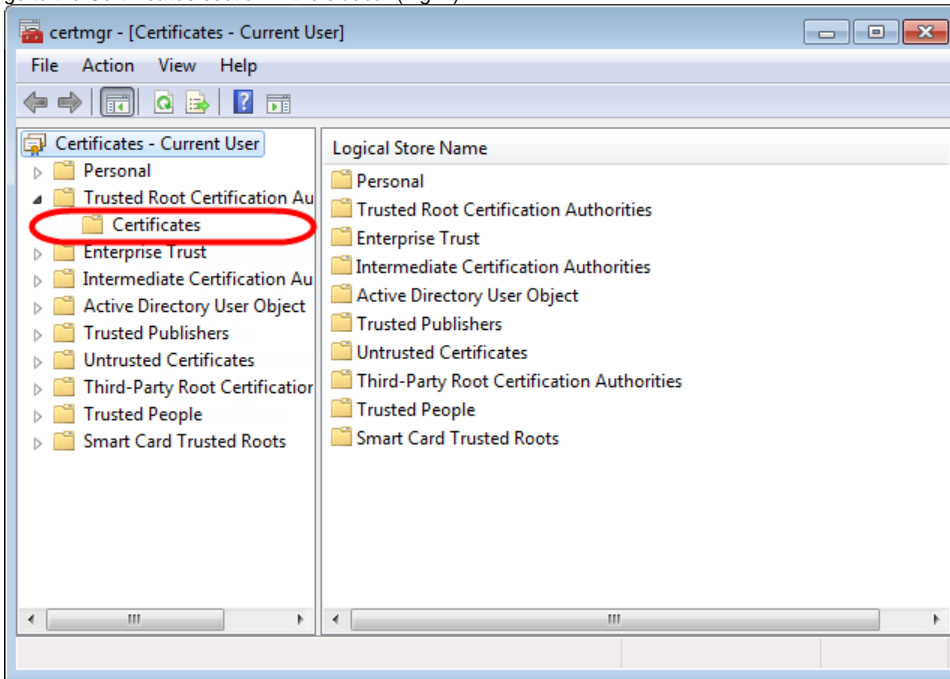


Fig. 4 – trusted directories

3. right-click on the **Certificates** folder and select **All Tasks\Import** from the context menu (Fig. 5).

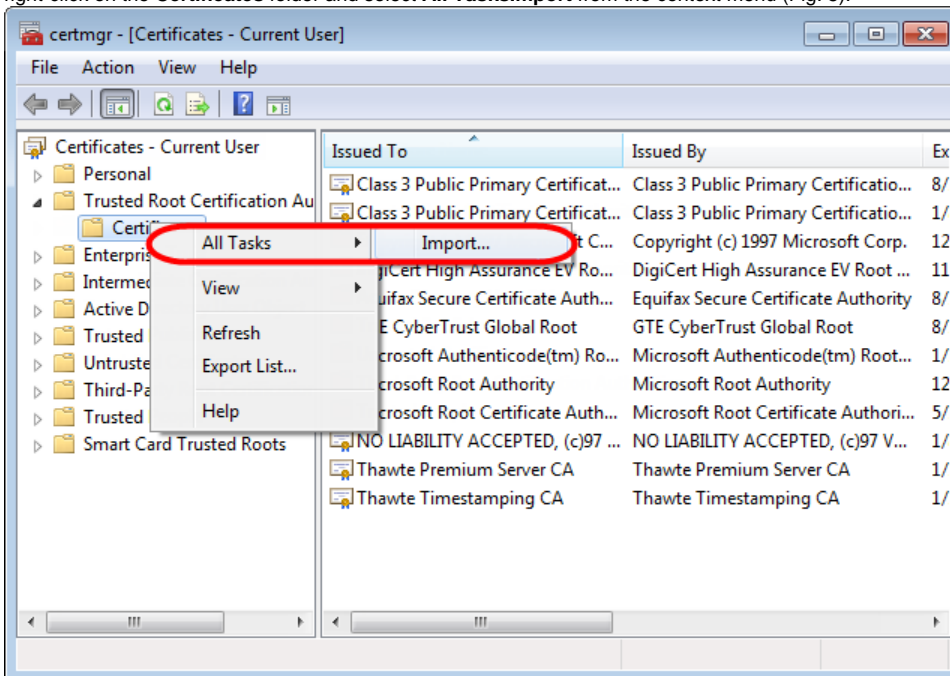


Fig. 5 – import certificate

This will open the **Certificate Import Wizard** (Fig. 6), in which you should press the **Next** button to be able to choose the **moex.cer** certificate file (Fig. 7);

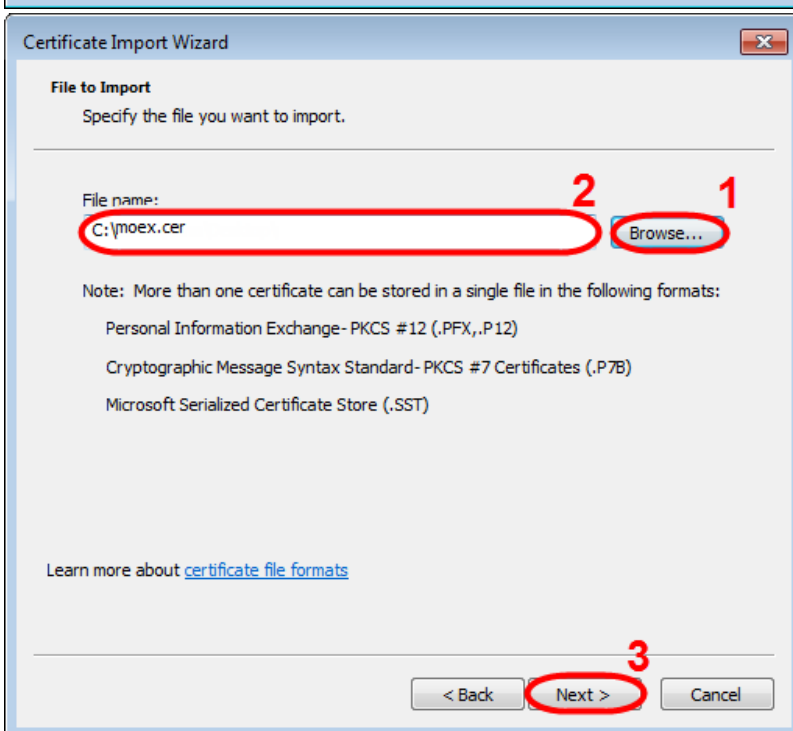
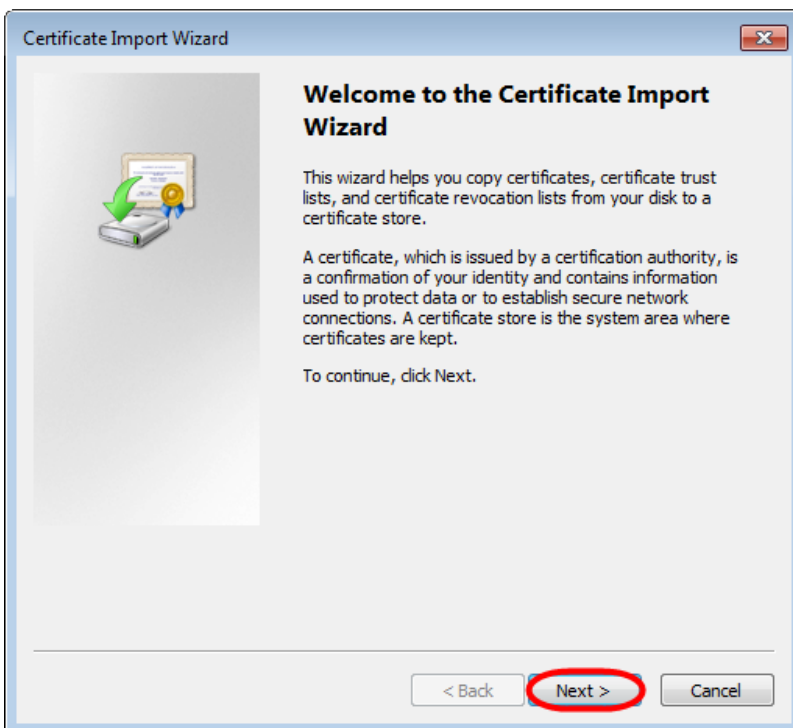


Fig. 6 – certificate import wizard

Fig. 7 – dialog box for selecting the imported file

4. click on the **Browse** button (see Fig. 7,1) and select the **moex.cer root certificate of the Moscow Exchange**. As a result, the **File Name** box will display path to the file (see Fig. 7.2). Then, click **Next** (see Fig. 7,3);
5. click the **Next** button in the dialog box of the **Certificate archive**, without changing the default parameters (Fig. 8), and then – click **Finish** to complete the certificate import (Fig. 9);

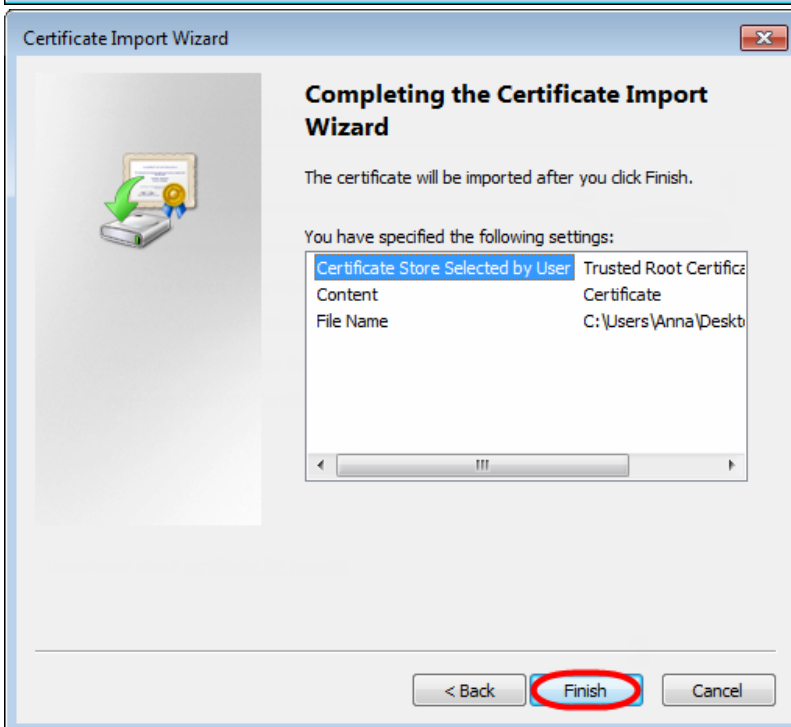
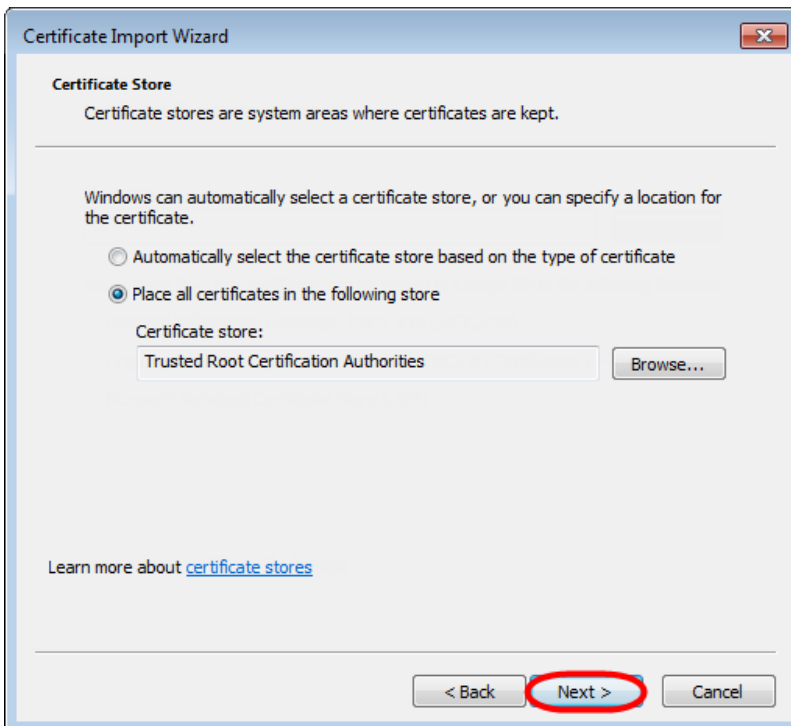


Fig. 8 – certificate archive

Fig. 9 – import complete

Upon the completion of import the Windows security window will open (Fig. 10), in which it is necessary to check the key print. Its number should match the number indicated on Fig. (10.1). If so – click **Yes** (Fig. 10.2).

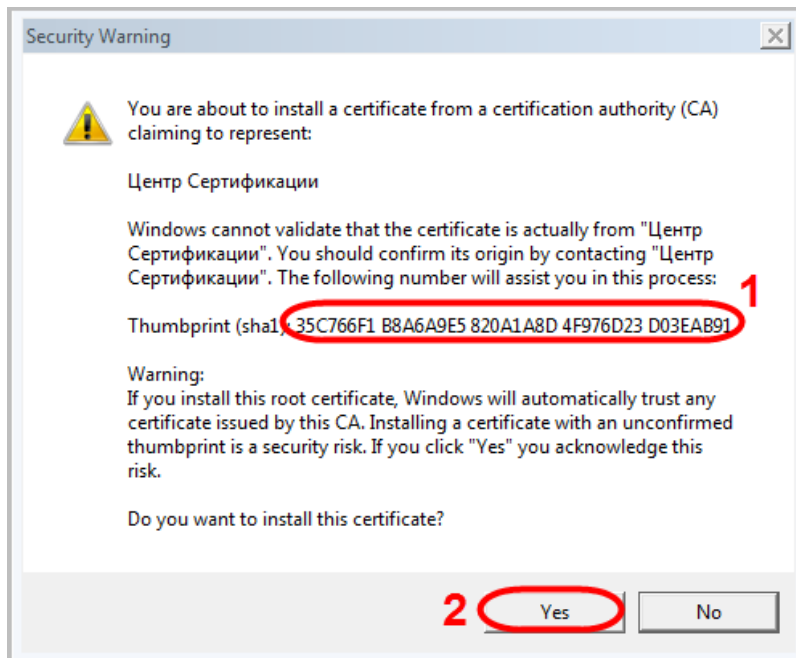


Fig. 10 – Windows security window

As a result you will see a notification about the successful import of the **moex.cer certificate of Moscow Exchange** to the list of trusted certificates (Fig. 11), where you need to click **OK**.

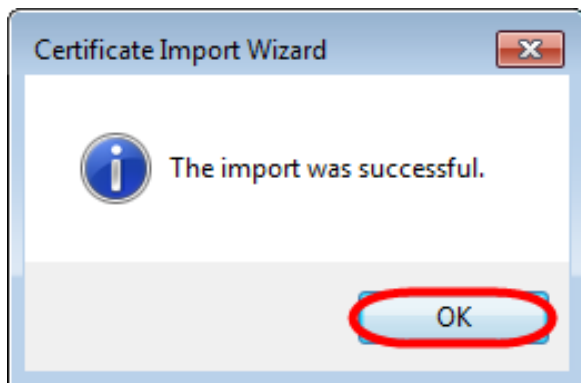


Fig. 11 – import success message

Next, close the system directory of certificates and restart your browser. After performing these settings a secure connection to the Web-client will be successfully established.