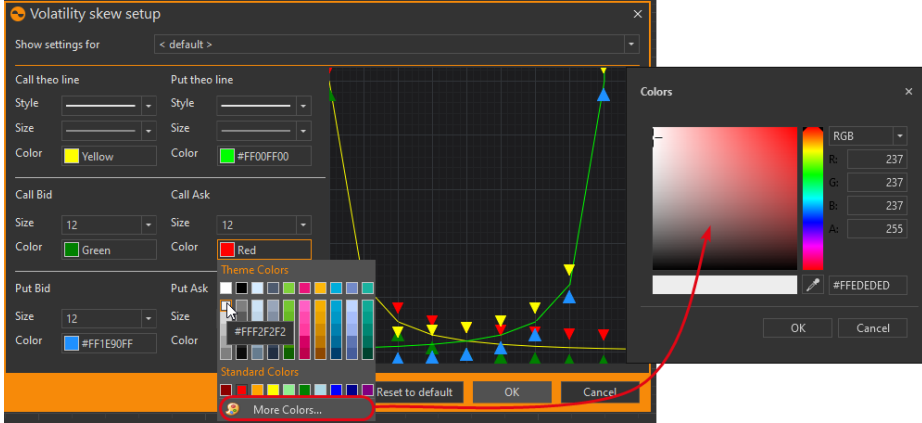


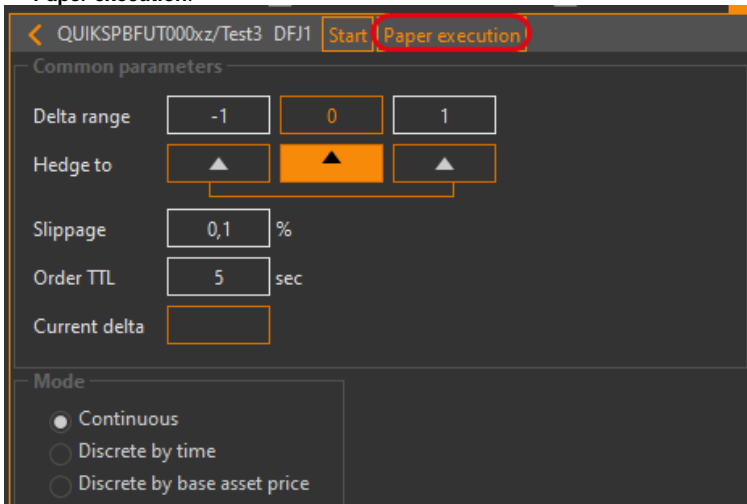
Release Notes

OW.

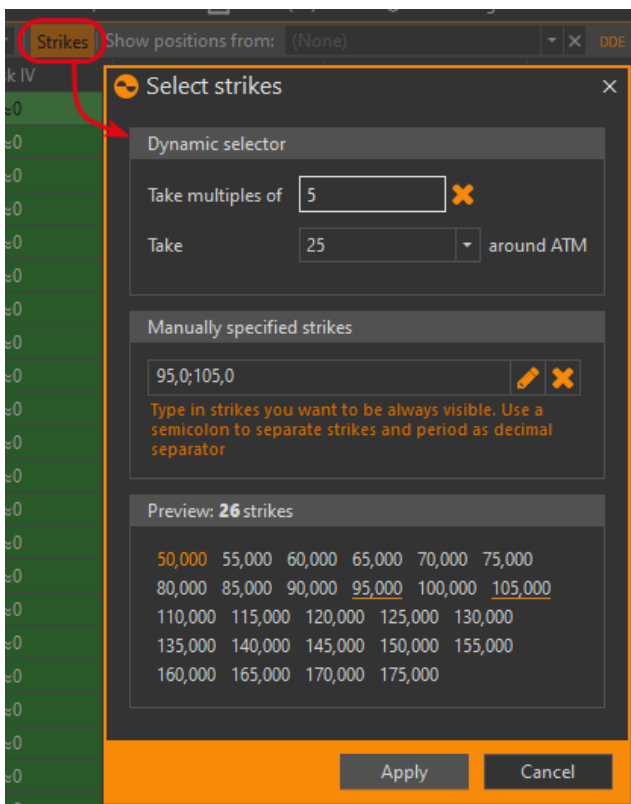
- **Ctrl.**
- **IQFeed**
- **Shift.**



- **Launch**
- **- Paper execution.**



- **Fit to view.**
- **Strikes,**



- Take multiples of 5
- Take around ATM - 25
- Manually specified strikes - "95,0;105,0"
- Preview - 26 strikes

- Clear strategy
- OptionWorkshop - Community Edition.
- Windows 7.

- Realized P&L
- CQGC.
- CQG.
- Fills
- spread desk
- QUIK

- Alt
- FitToView
- OW
- "+"
- Position type P.T.
- Vola IV
- Commission Comis

- Dr.Web **OW.Math.exe**
- OW
- **Price range**
- -
- ,
- -- **app/**

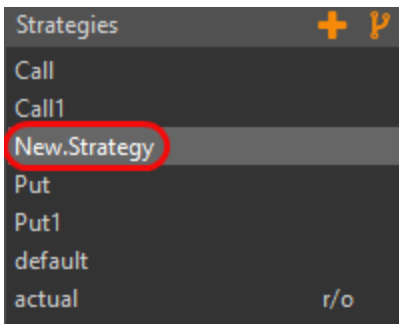
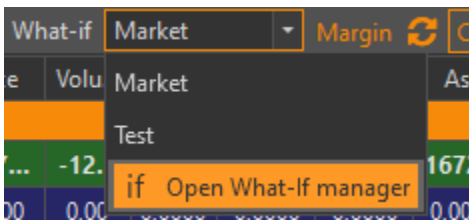
- what-if (– “copy”)
- ,
- .

- **Charm Vanna**
- First Time User Experience:
 - : , , ,
 -

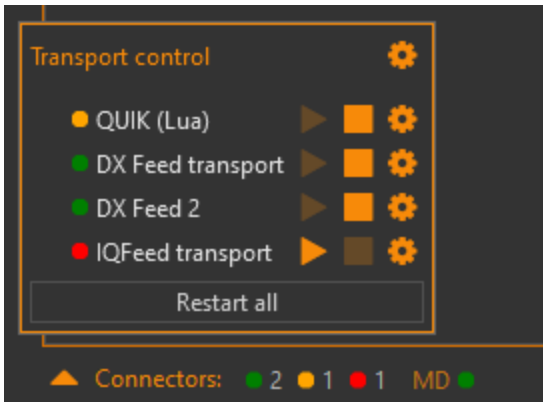
- **OptionWorkshop.Math.exe.**

- **Price Range**
- OW 21.2.2226
- **CQG GTC. DAY**
- CQG
- OW
- **IQFeed**
- () , QUIK

- :
-
-
-
-
- What-If



- :
- - ,
- ,
-



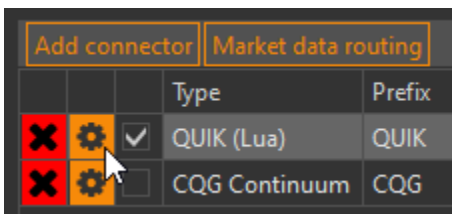
- :
- ○
- ○
- ○
- ○
- ○
- ○ **Apply Changes**
- ○ **Fit To View**

- OW,
- **Clear Strategy**,
- ,
- -
- , -

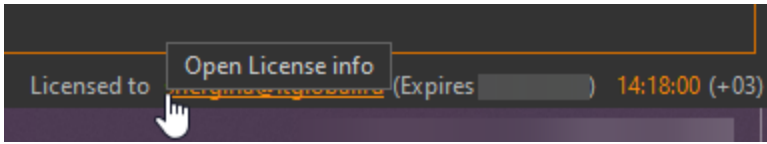
- **QUIK 8.11**
- :
- ○
- ○ All
- HardwareId
- -@OptionWorkshopBot

- **Interactive Brokers** Actual
- :
- ○
- ○ **Data source**
- , - ()

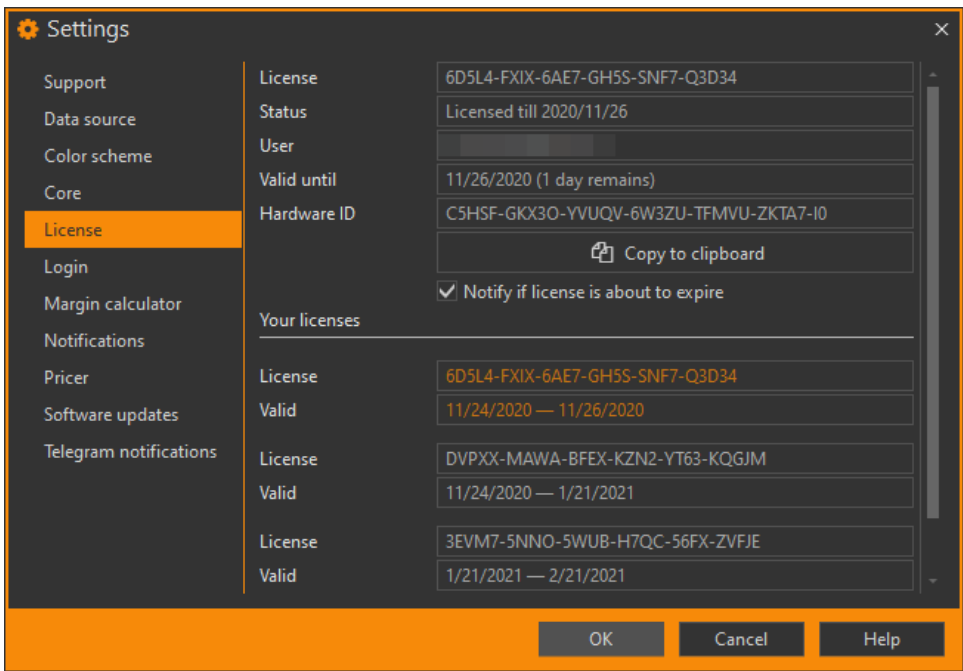
- **TeamViewer-**
- ()



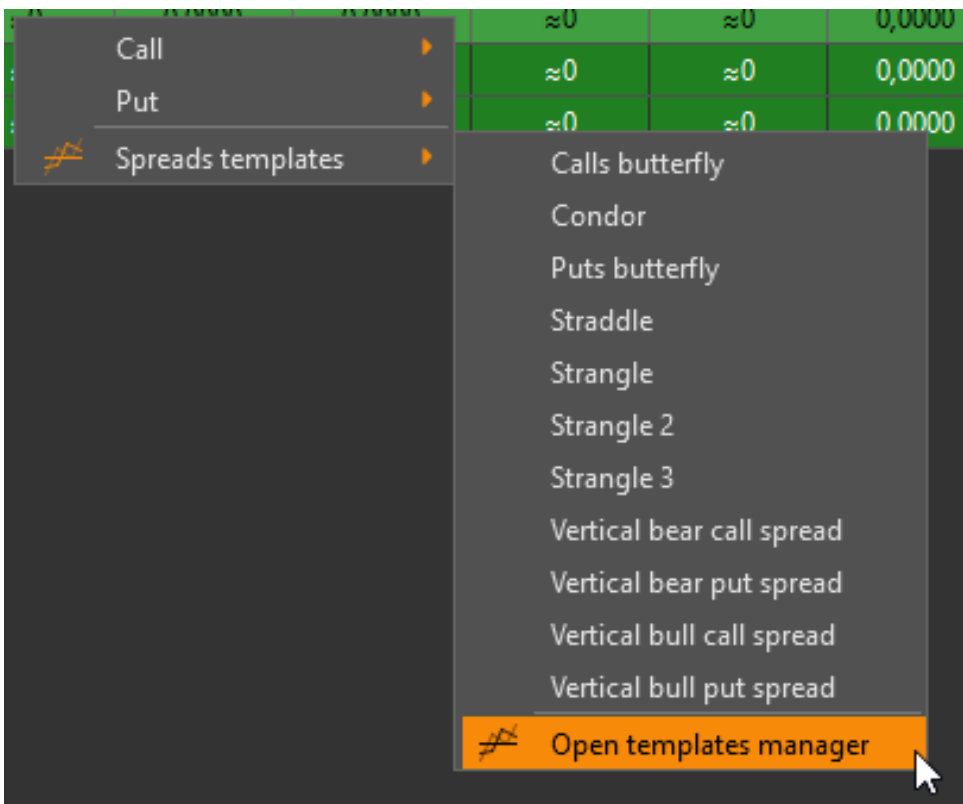
- **what-if**
- **License**



- License ,



- Open templates manager



- Options desk (P&L)

- P&L (C) P&L (S)
- , price range
- , Windows, Win7
- ,
- FORTS

OptionWorkshop. (.). , .

Proxy

-.

- ()
- -
- -
- (default , actual)
- .
- Disconnected (Offline)

- ,
- **Hedge to**
- -
- **P&L():**
- -
- -
- **Strategy Templates**
- (, -) (-)
- **DDE-**
- **Select instruments**
- ,
- ,
- ask, bid, theor price 0
- - , OW ,
- **Interactive Brokers** 7497
- -
- : SQLCE SQLite

, - , , , .

.

. Show positions from. .

Telegram

. , . Telegram-.

Vola

- CGate
- P&L
- , -
- , csv-
- ATM

FOS

FOS (Futures Orders Stairs).

- , , , , ,
- :
- 1.
- 2.
- 3.
- 4.
- 5.
- 6. () , .

Telegram Bot

telegram-

CQG

CQG . , , .

TeamViewer

TeamViewer, . 14- .

- () , .
- .
- .
- Money limits , . , . , .
- .
- .
- 75 100 .
- - , () .
- .
- - .
- .

- - QUIK.
- price range .
- CQG.
- - .
- . Windows.

- [Telegram-](#) ;

- ;
- ;
- ;
- -;
- (,) Ctrl Enter, -;
- Alt+Enter Apply changes;
- LUA (QUIK) .

- - , ;
- " " ;
- CQGCAAdapter (,) , ;
- - ;
- cgate;
- cgate-;
- (log);
- csv- , Excel;
- , ;
- ;
- ();
- (modify) ;
- Set price;
- ;

(Positions):

- ;
- **Mnns** (Moneyiness), : , , ;
- **Risk**, , , .

(Charts):

- P&L .

(Option Desk) bid ask, / .

- -.

“OptionWorkshop: ”, .

- / .
- Set price () .
- : csv- .

OptionWorkshop, .

- QUIK Receive marketdata (). QUIK-, .
- .
- .
- **Set price** ().
- (Positions) **Orders** (). , . (Orders manager), .
- **Notes** (Positions), .
- , /, **Rename**.
- .

- - .
- P&L (Money) .
- (Option desk) .
- , .
- .
- , Total (Positions).
- QUIK.
- .
- « » QUIK.
- .
- , IB.
- QUIK.

-
-
-
-
-
- What-if
- " " "
-

-
-
-
-
-
-
-

16.12.1307 (Pricing models). (Black, Black-Scholes, Cox-Ross-Rubinstein)
, (Volatility skew)

16.11.1268 30 : , /, .. , !

- :,, (, .)
-

- (Table settings).
- OptionWorkshop.
- (Orders).
-
- (Strategy lines setup).
- (Positions manager).
- what-if
- Spread Desk ATM-.
-

- :
 -
 - **Shift.**
- : **Select all** - , **Deselect all** -
-
-
-
-
- :
 -
 -

• OptionWorkshop , P&L, P&L.

- * -
-
-
- , what-if .
- -.
- : actual.
- FOS.
-
-

- ,
- ,
- ,
- , DDE – **Update period;**
- OptionWorkshop **Ctrl+Tab.**

-
-
-
-
-
-
-
-
- DDE .

-
- what-if .
-
- [Getting Started](#) .
-
-

- **Show Options Total** .

- **Price range** .
- /.
-
- **Money limits.**
-
-

- **(Price range)** .
- , 30 %.
- CQG Cintinum.
-
-
- Last price – ();
- P&L (M) – / , ();
- Bid/Offer – , ().

- AmmyAdmin Teamviewer.
- , , ,

- excel.
- IB TWS.

- –
- –

-
- QUIK LUA .
-
-
-
- Interactive Brokers.
- Interactive Brokers.

- .
- .
- , CBOE VIX (Interactive Brokers).
- CQG IB TWS.
- .

:

- , , 5, .
- , , cgate .
- , - default.
- - ().

:

- cgate %appdata%.

:

- ().
- Hot fix Plaza 2.

:

- .
- Last Price .
- .
- .
- (.
- .
- .
- .

:

- FOS, -.
- .
- QL.
- .
- .
- .
- CQG Continuum.
- LUA QL.
- QL.
- .
- .
- .
- .
- .
- .
- .
- .
- QL.
- .
- .
- .

:

- .
- .
- .
- .

:

- .
- .
- .