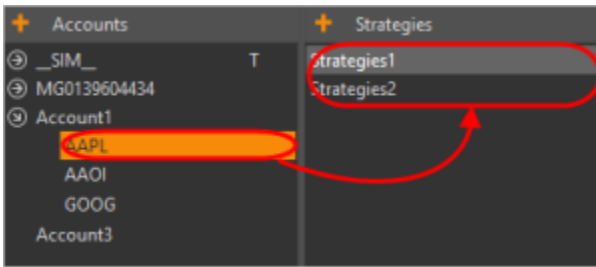
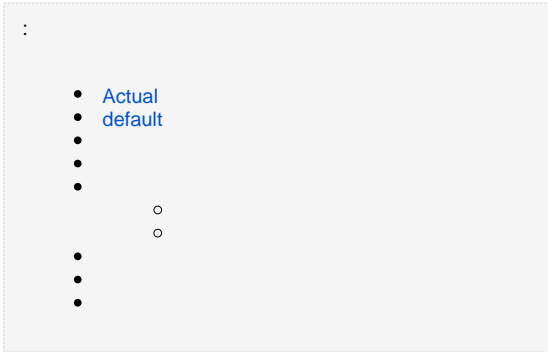


- , . () **Accounts.**



1-

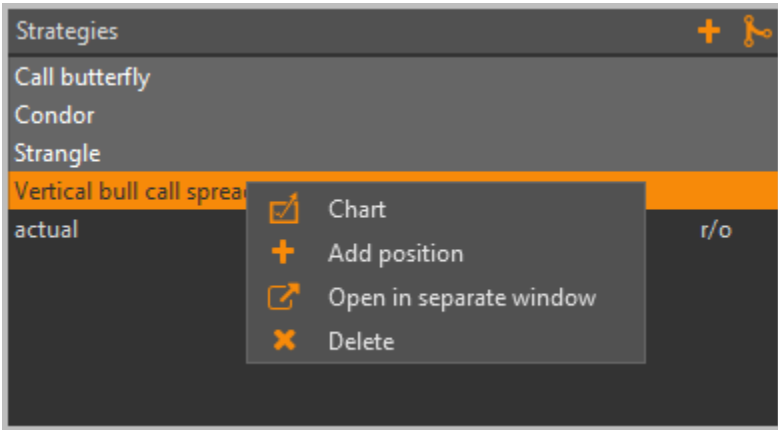


- **actual**, . , ;
- **default**, . , , . ;
- , ( **actual**). ;
- **custom**, . , , .

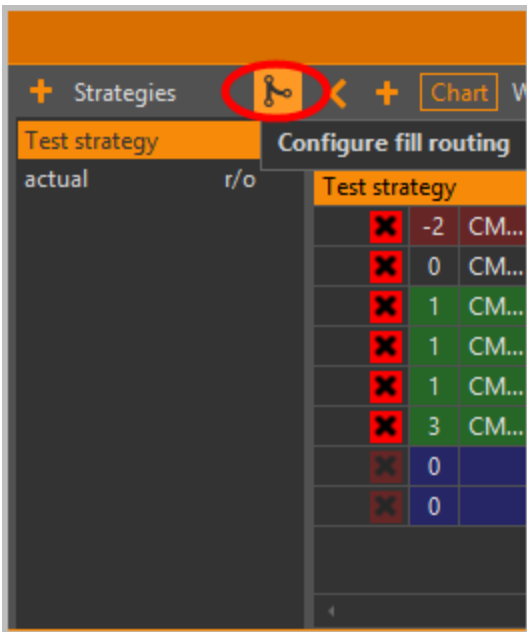
- -, L. **actual** r/o ( ).

- **Open/Close** - ( );
- - (-);
- **Set price** - ( );
- - ( );
- - ( );
- - ( **actual**);
- - ;
- - ( );
- - ( );
- - ;
- - Telegram ;
- - ;
- - ( **actual**).

- (Chart);
- (Add position);
- (Open in separate window);
- (Delete).



2-



3-

Actual

actual. . . . .

default

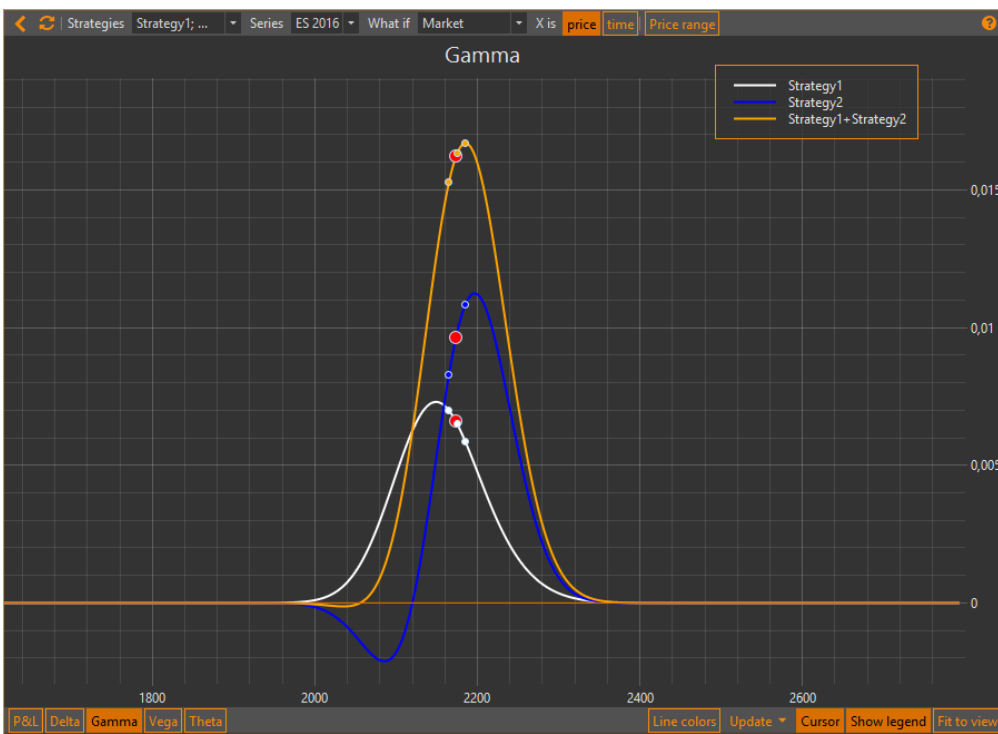
. . . . .

( actual) . . . . .

Q	Instrument	Strike	Exp	Position type	Vol	Price	Volume	Theo	Bid	Ask	P&L	P&L (...)
<b>Strategy1</b>												
-1	CME ES FC U16 2185	2185,0	22	M	9,5673	14	-14	14,03128	14	14,25	-0,03128	0
1	CME ES FC U16 2165	2165,0	22	M	10,9344	27,25	26,12047	26	26,5	-1,12953	-62,5	
0					0,0000	0	13,25	0	11,75	12,5	-1,16081	-62,5
0					0,0000	0	13,25	0	11,75	12,5	-1,16081	-62,5
<b>Strategy2</b>												
-2	CME ES FC U16 2165	2165,0	22	M	10,9344	27,25	-54,5	26,12047	26	26,5	2,25906	112,5
3	CME ES FC U16 2185	2185,0	22	M	9,5673	14	42	14,03128	14	14,25	0,09384	0
0					0,0000	-12,5	-12,5	0	-11	-9,25	2,35289	112,5
0					0,0000	-12,5	-12,5	0	-11	-9,25	2,35289	112,5
<b>Strategy1+Strategy2</b>												
-1	CME ES FC U16 2165	2165,0	22	M	10,9344	27,25	-27,25	26,12047	26	26,5	1,12953	62,5
2	CME ES FC U16 2185	2185,0	22	M	9,5673	14	28	14,03128	14	14,25	0,06256	0
0					0,0000	0,75	0,75	0	1,5	2,5	1,19209	62,5
0					0,0000	0,75	0,75	0	1,5	2,5	1,19209	62,5

4 -

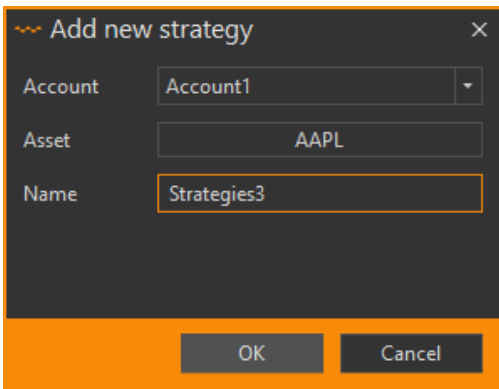
, "A" +4, "B" -7. "A+B" -3.



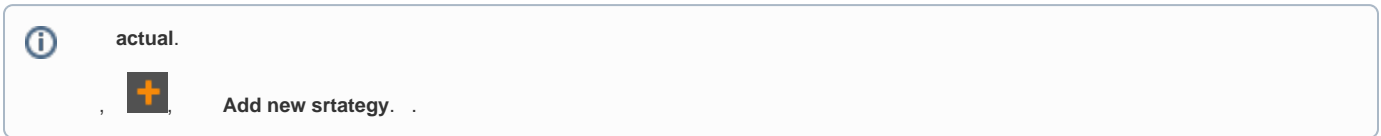
5 -

1. Add strategy;
2. Strategies.

Add new strategy , , OK.

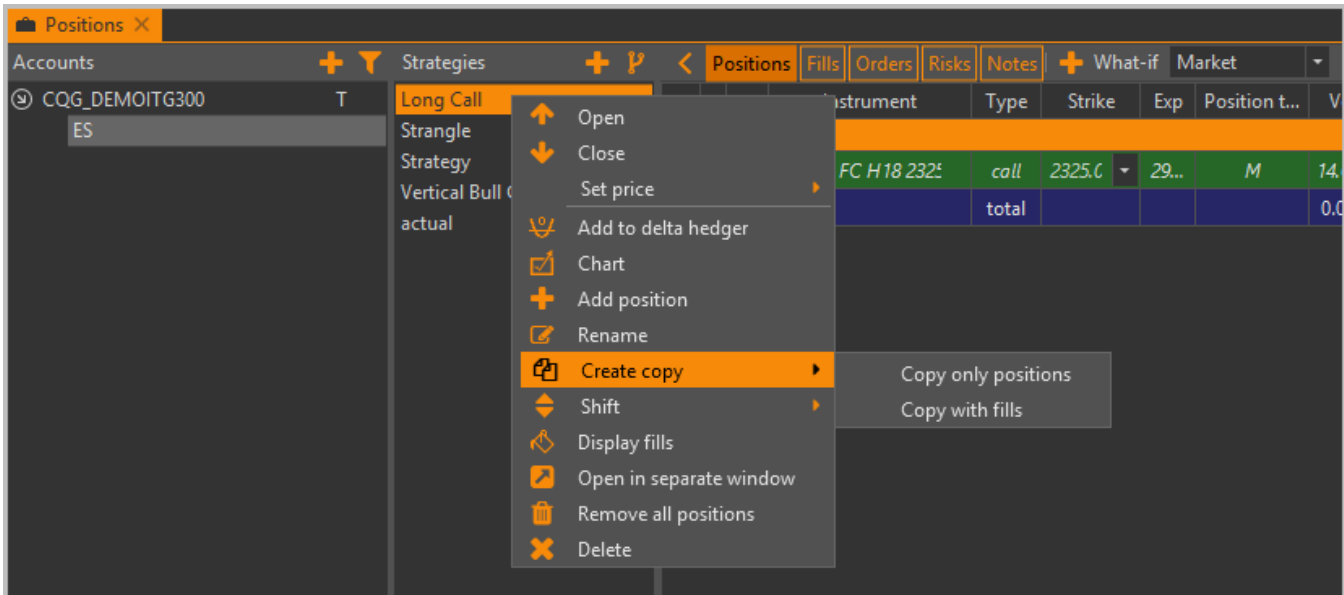


6 -



OptionWorkshop :

- (Copy only positions).
- (Copy with fills).



7 -

1. ;
2. Create copy ( ) Copy only positions ( ) .

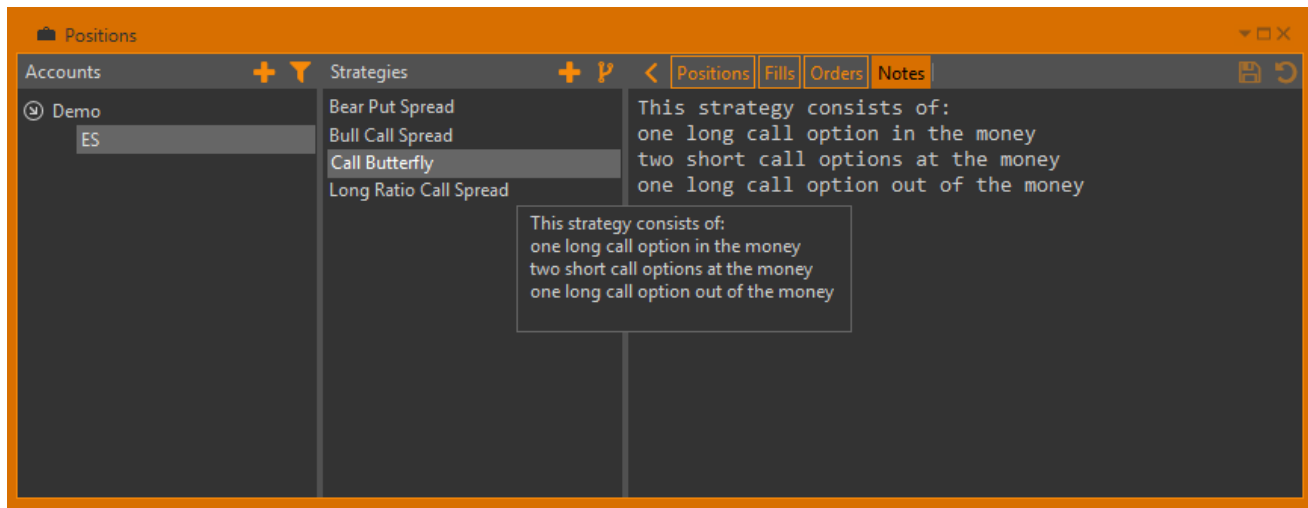
:

1. .
2. **Create copy () Copy with fills ( )**.

. ( Adjustment) . (Manual) (Exchange ID).

:

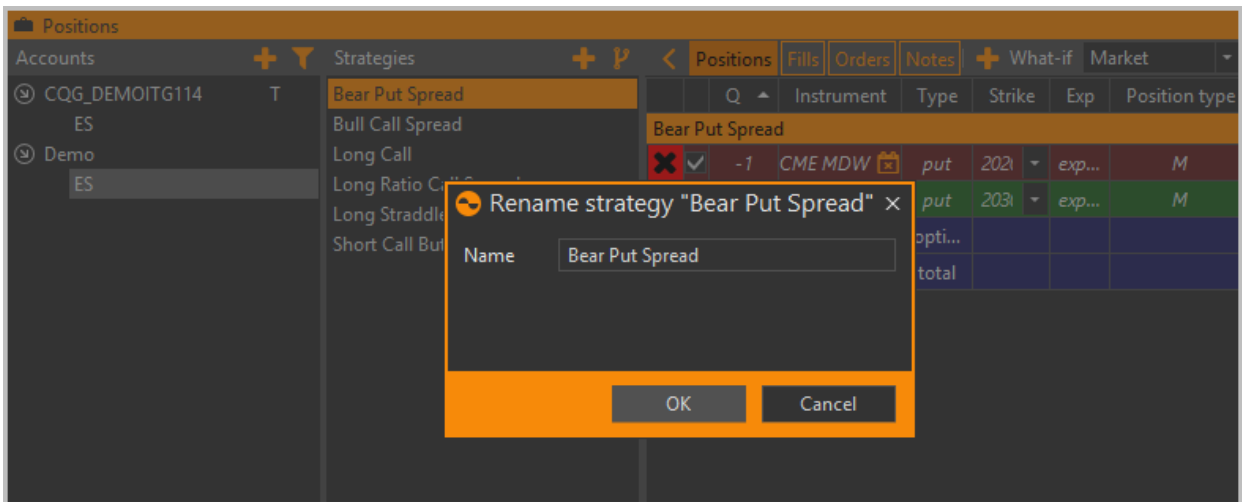
1. ;
2. **Notes** (Positions);
3. ;
4. 



8-

:

1. ;
2. ;
3. .



9 -

:

1. ,
2. **Delete** ;
3. , , , .

, , -/ ( L), .